

Flange Type for Resin Pipe

LC-Connector

Soft connector for resin pipe of PVC (VP, VU).



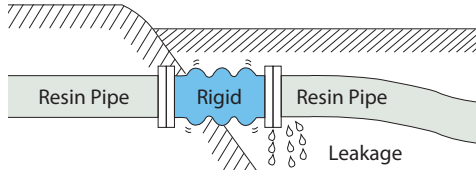
Make-to-order products

Feature

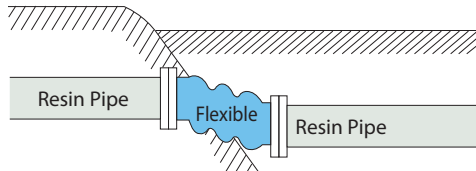
Soft

As LC connector is more flexible than PVC pipes, it can absorb stress caused by uneven ground subsidence, etc. and can protect the pipes.

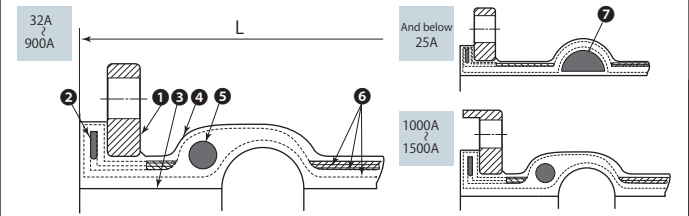
Flexible connector for steel pipe



LC Connector



Construction



No.	Parts	Material	No.	Parts	Material
①	Flange	Mild Steel (SS400)	⑤	Reinforcing Fiber	Synthetic Fiber
②	Reinforcing Ring	Mild Steel (SS400)	⑥	Reinforcing Ring	Mild Steel (SS400)
③	Inside Rubber	Synthetic Rubber	⑦	Filler	Special High Polymer
④	Outside Rubber	Synthetic Rubber			

- Both aboveground and underground types are available. The above figure shows underground type.
- 20A and 25A are filled arch type. The filled arch type is also producible for more than 32A.

Classification

Lateral Movement		
100 mm and 200 mm		
Aboveground / Underground Applications	Classification of Pressure	Max. Working Pressure MPa (kgf/cm ²)
Aboveground application (not applicable to Negative Pressure)	Low Pressure	Less than 0.2 (2.0)
	Middle Pressure	Less than 0.5 (5.1)
	High Pressure	Less than 1.0 (10.2)
Underground application Negative Pressure: -0.1 MPa (-760 mmHg)	Low Pressure	Less than 0.2 (2.0)
	Middle Pressure	Less than 0.5 (5.1)
	High Pressure	Less than 1.0 (10.2)

※Please contact us when using negative pressure under the high negative pressure conditions, such as the negative pressure close to 24 hours operation or full vacuum, or the pump has more start-stop frequency.

Dimensions and Allowable Movements

Nominal Dia. [mm]	100 mm Lateral Movement 3 – Bellow [mm]				200 mm Lateral Movement 4 – Bellow [mm]			
	L	Elon.	Comp.	Mass [kg]	L	Elon.	Comp.	Mass [kg]
15	350	40	60	2.8	450	40	60	3.4
20	350	40	60	3.2	450	40	60	3.8
25	350	40	60	3.6	450	40	60	4.3
32	350	40	60	4.4	450	40	60	5.3
40	350	40	60	5.2	450	40	60	6.3
50	350	40	60	6.2	450	40	60	7.4
65	350	40	60	8.0	450	40	60	9.5
80	350	40	60	9.1	450	40	60	11
100	350	40	60	11	450	40	60	13
125	350	40	60	15	450	40	60	17
150	500	40	60	20	600	40	60	22
200	500	40	60	26	600	40	60	28
250	500	40	60	37	600	40	60	43
300	550	40	60	46	650	40	60	55
350	550	50	70	59	650	50	70	68
400	550	50	70	74	650	50	70	85
450	550	50	70	95	650	50	70	105
500	550	50	70	110	650	50	70	125
600	550	50	70	145	650	50	70	168
700	650	50	70	170	750	50	70	197
800	650	50	70	190	750	50	70	225
900	650	50	70	220	750	50	70	254
1000	700	50	70	250	800	50	70	287
1100	700	50	70	280	800	50	70	324
1200	700	50	70	310	800	50	70	357
1350	700	50	70	370	800	50	70	420
1500	750	50	70	590	950	50	70	680

L. = Overall Length Elon. = Elongation
Comp. = Compression

- Mass indicates the weight for underground type.
- Please use each movement within allowable movements.
- Please note that the information in the above table is for single movement only. In case of complex movements, please do adjustment by using the following formula.

C.A.E. (C.A.C.) = A.A.E.(A.A.C.) × {1 - ($\frac{T.M.}{A.T.M.} + \frac{A.M.}{A.A.M.}$)}

C.A.E. (C.A.C.): Correct Elongation Movement (Correct Compression Movement)
A.A.E. (A.A.C.): Allowable Elongation Movement (Allowable Compression Movement)
A.T.M.: Allowable Transverse Movement
A.A.M.: Allowable Angular Movement

This brochure may be revised without prior notice. We apologize in advance for any inconvenience this may cause.

Agent

TOZEN Corporation

8-4, Asahi, Yoshikawa
Saitama 342-0008 Japan

WE25-1503